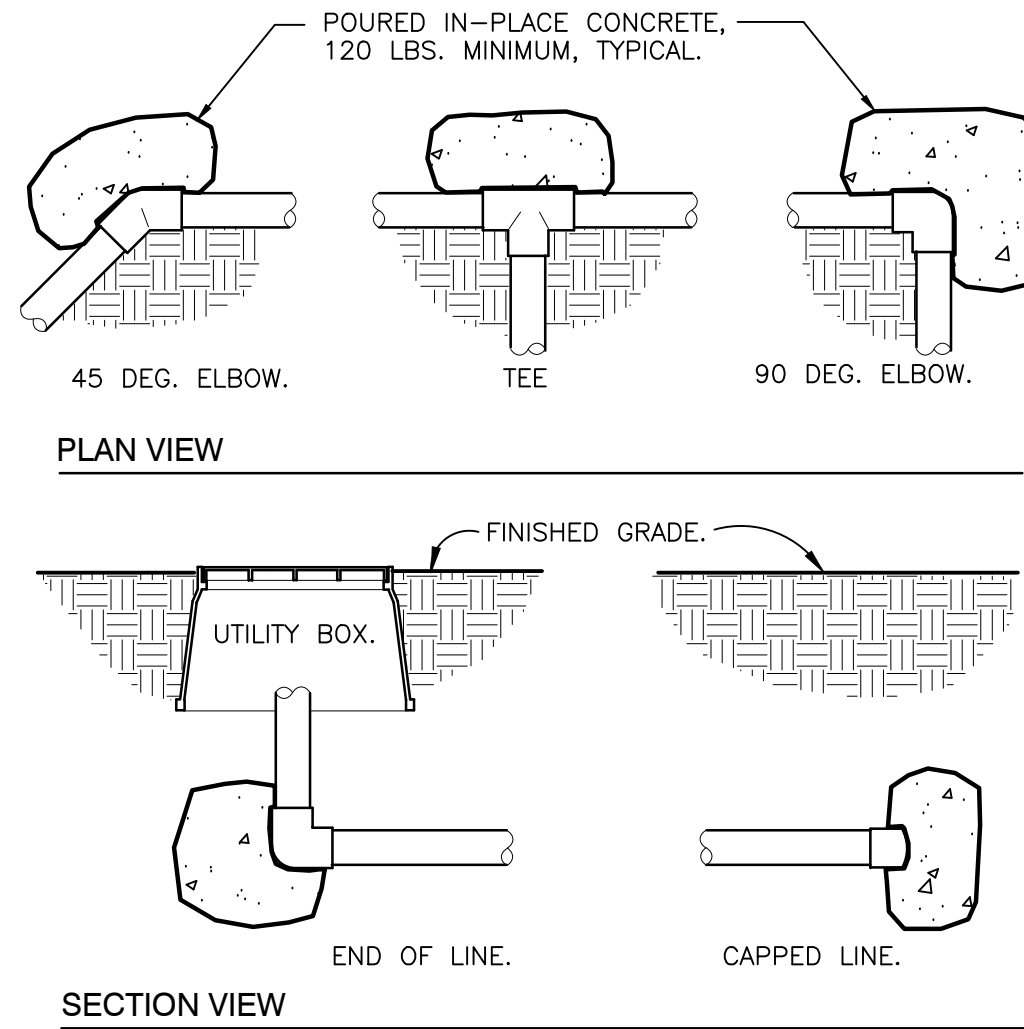
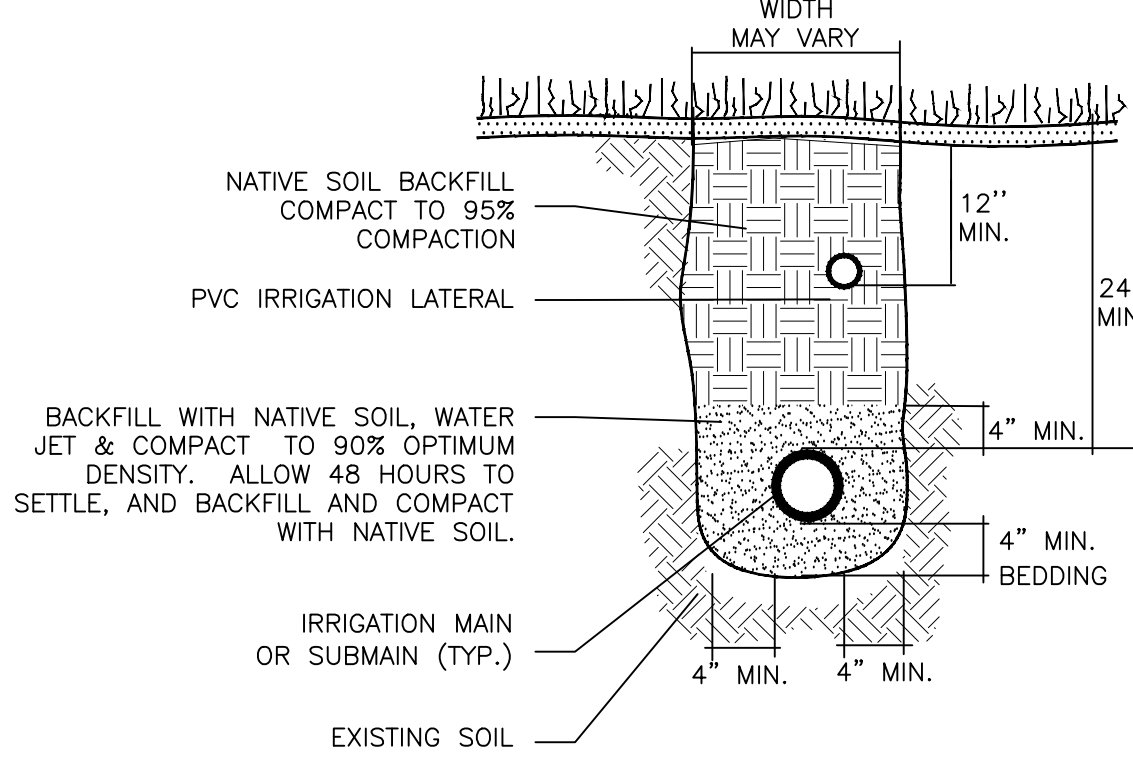


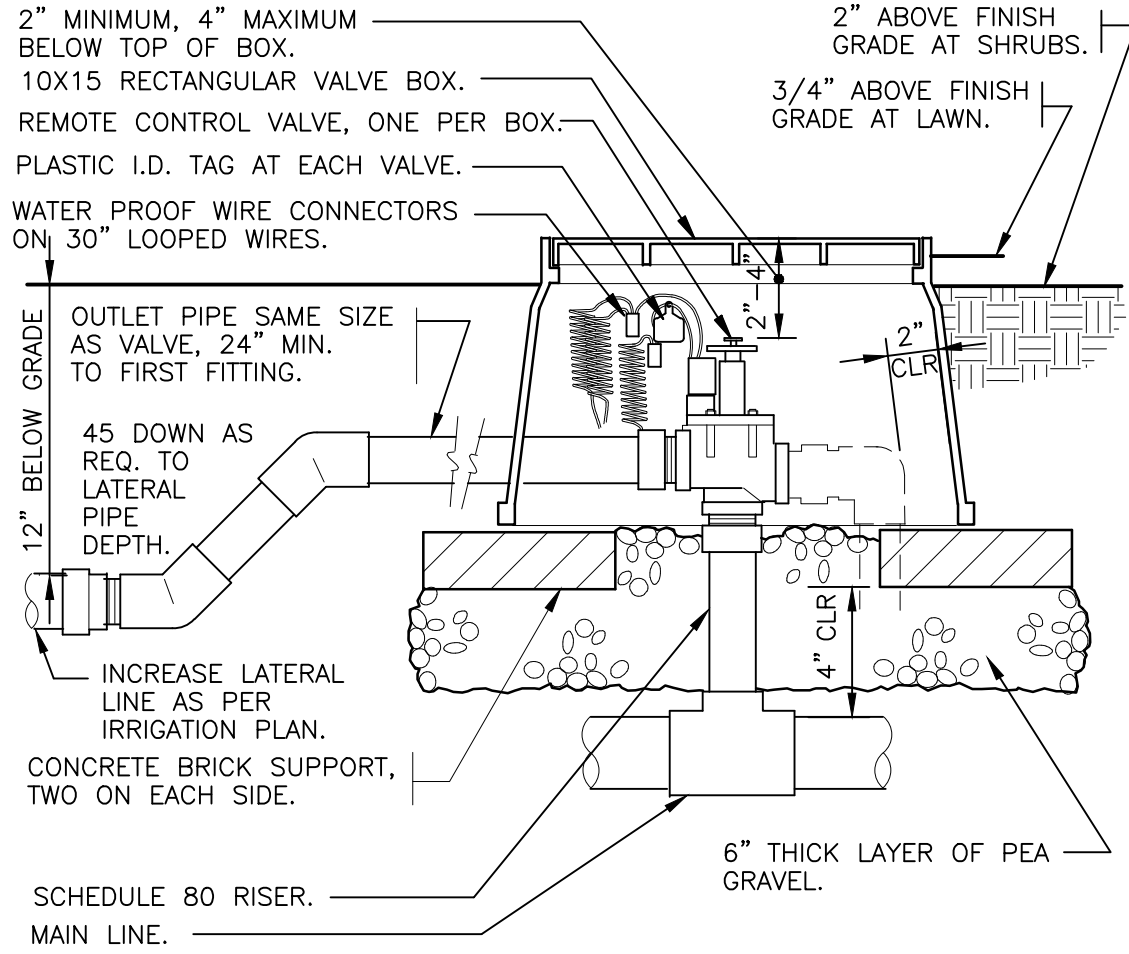
Plotted By: Hargett, Tom Sheet Set: CYPRESS LANDING CONDOMINIUM PARKING LOT Layout: L2.50 IRRIGATION DETAILS February 12, 2025 05:45:59pm K:\VTL-Civil\044-Jobs\044203010-Cypress Nook\CAD\Plansheets - Cypress Nook\L2.50 IRRIGATION NOTES.dwg
This document, together with the concepts and designs presented herein, is intended only for the specific purpose and client for which it was prepared. Reuse of and improper reliance on this document without written authorization and adaptation by Kimley-Horn and Associates, Inc. shall be without liability to Kimley-Horn and Associates, Inc.



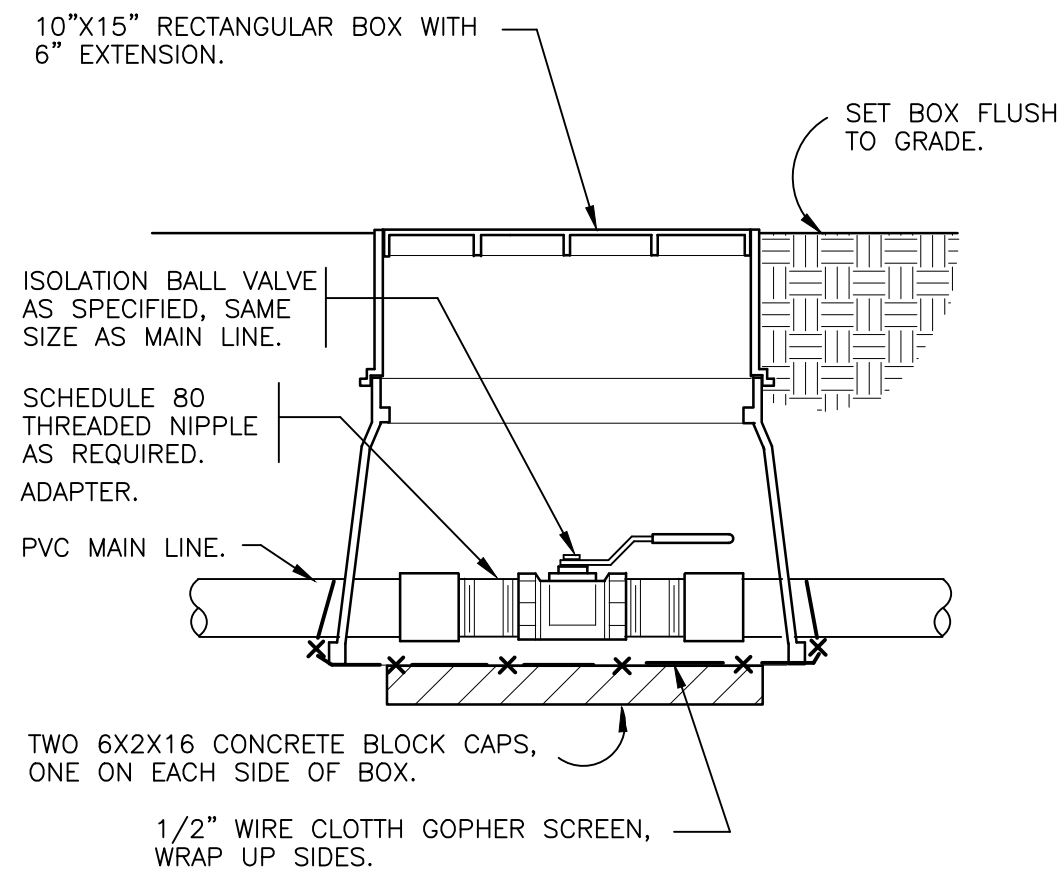
1 THRUST BLOCKING
3/4" = 1'-0"
32 8409.76-01



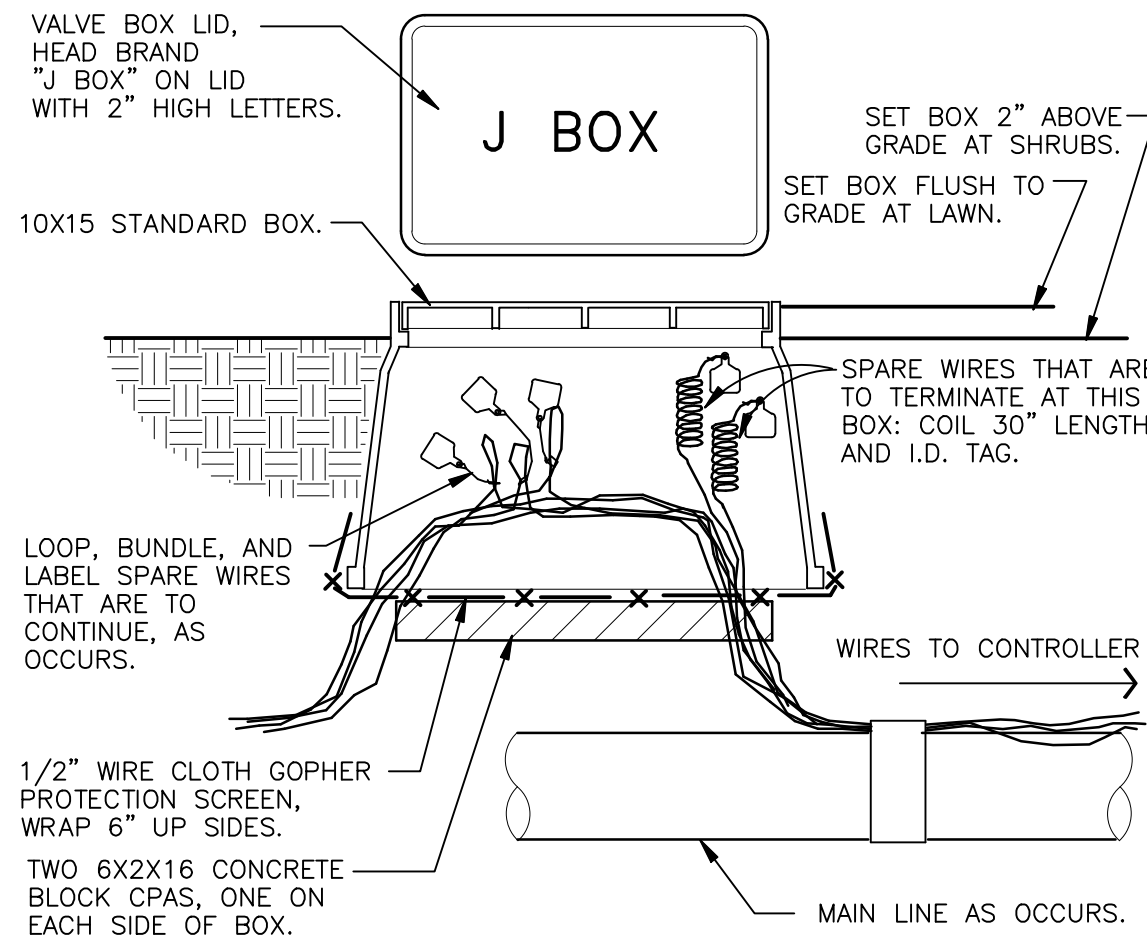
2 TRENCHING DETAIL
NOT TO SCALE
32 8409.76-03



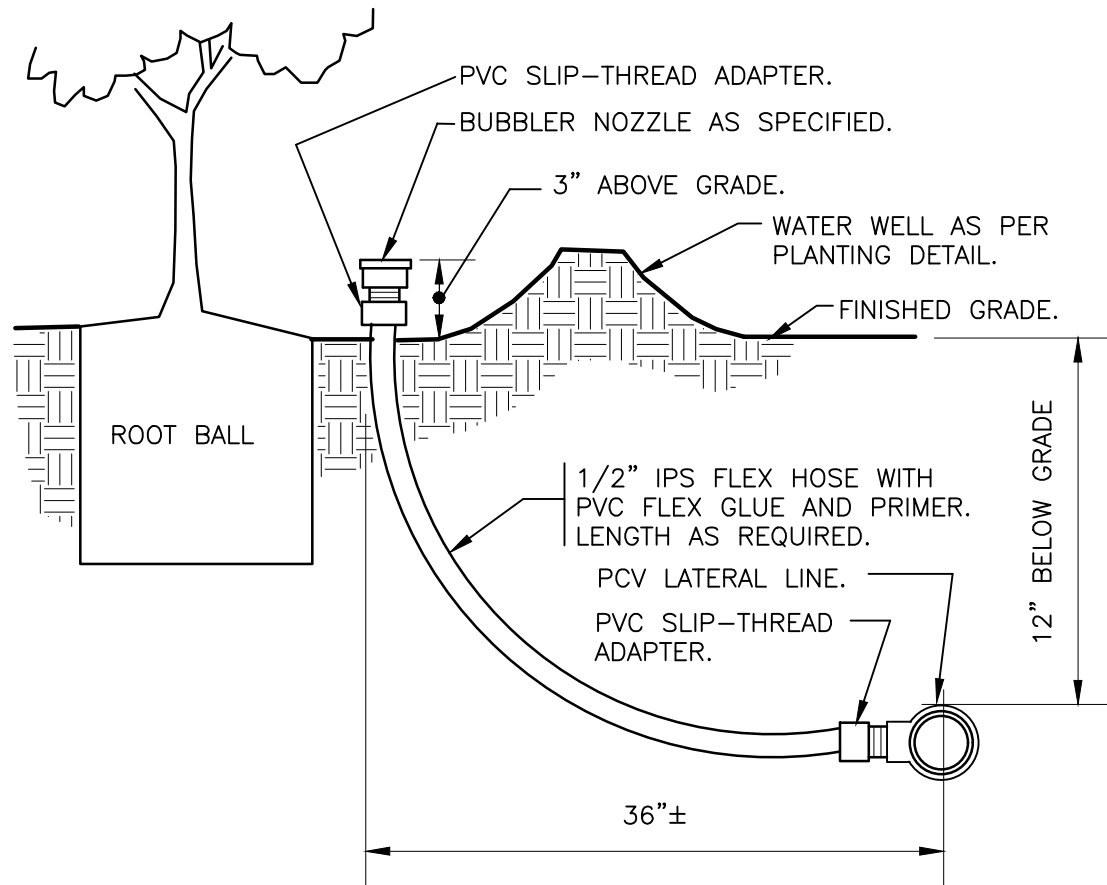
3 ELECTRIC REMOTE CONTROL VALVE
1 1/2" = 1'-0"
32 8406.13-01



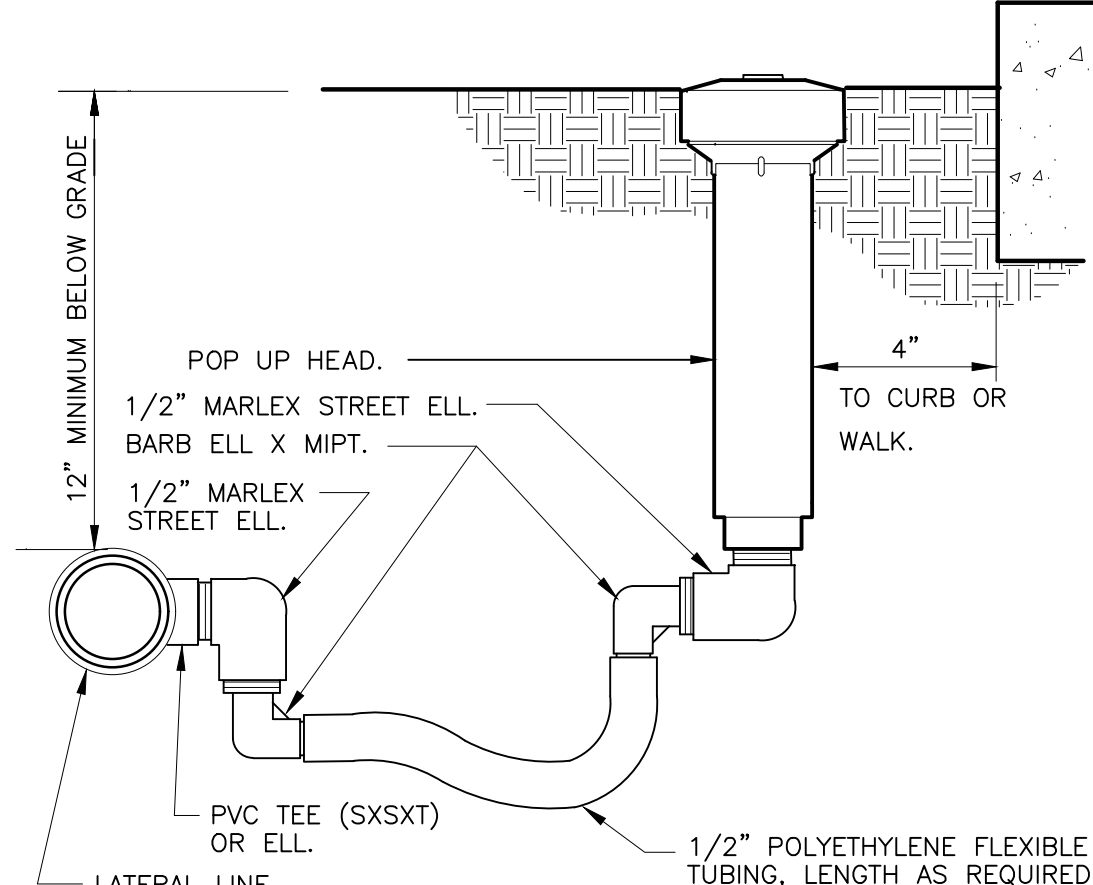
4 BRASS BALL ISOLATION VALVE
1 1/2" = 1'-0"
32 8406.33-02



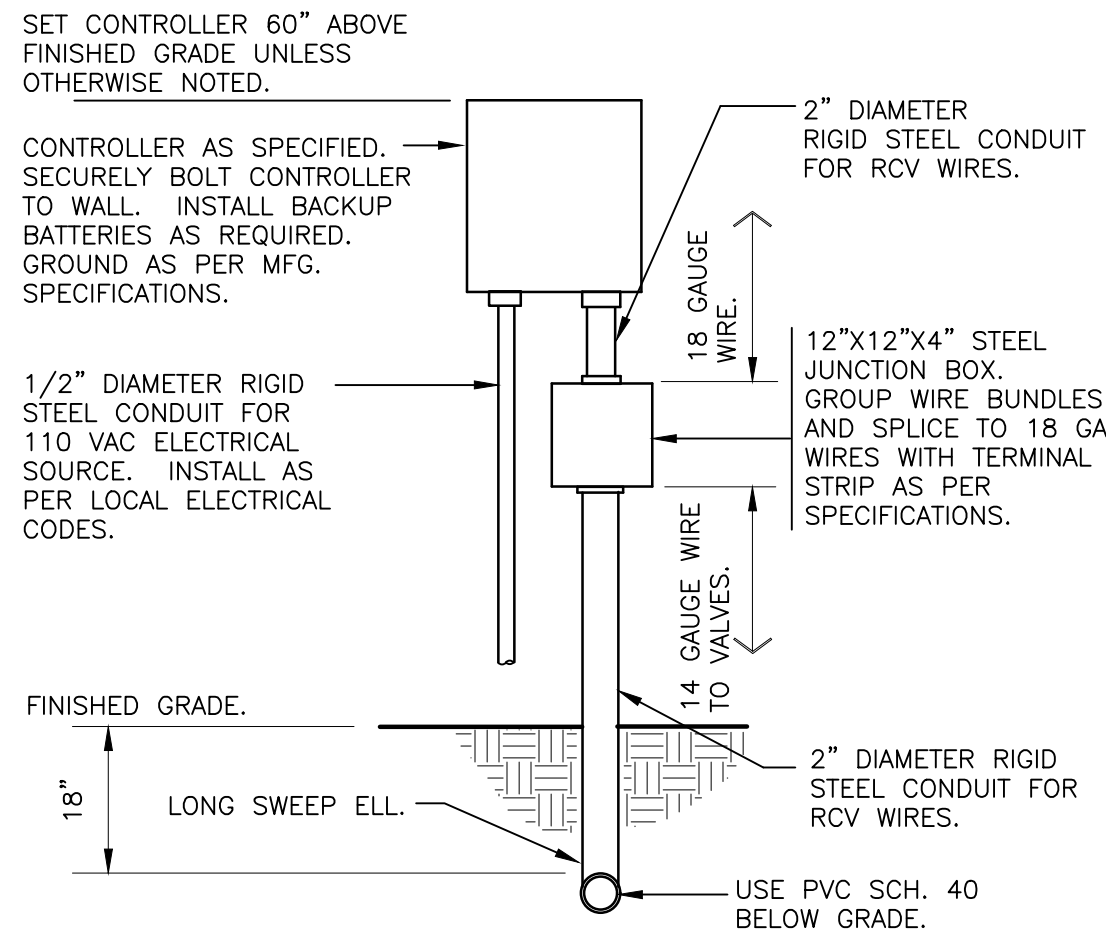
5 WIRE BUNDLE JUNCTION BOX
1 1/2" = 1'-0"
32 8409.79-01



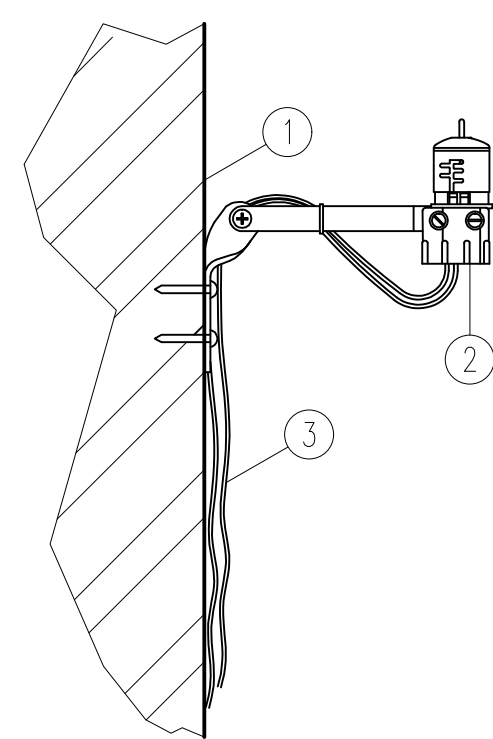
6 BUBBLER ON FLEX HOSE RISER
3" = 1'-0"
DETAIL-FILE



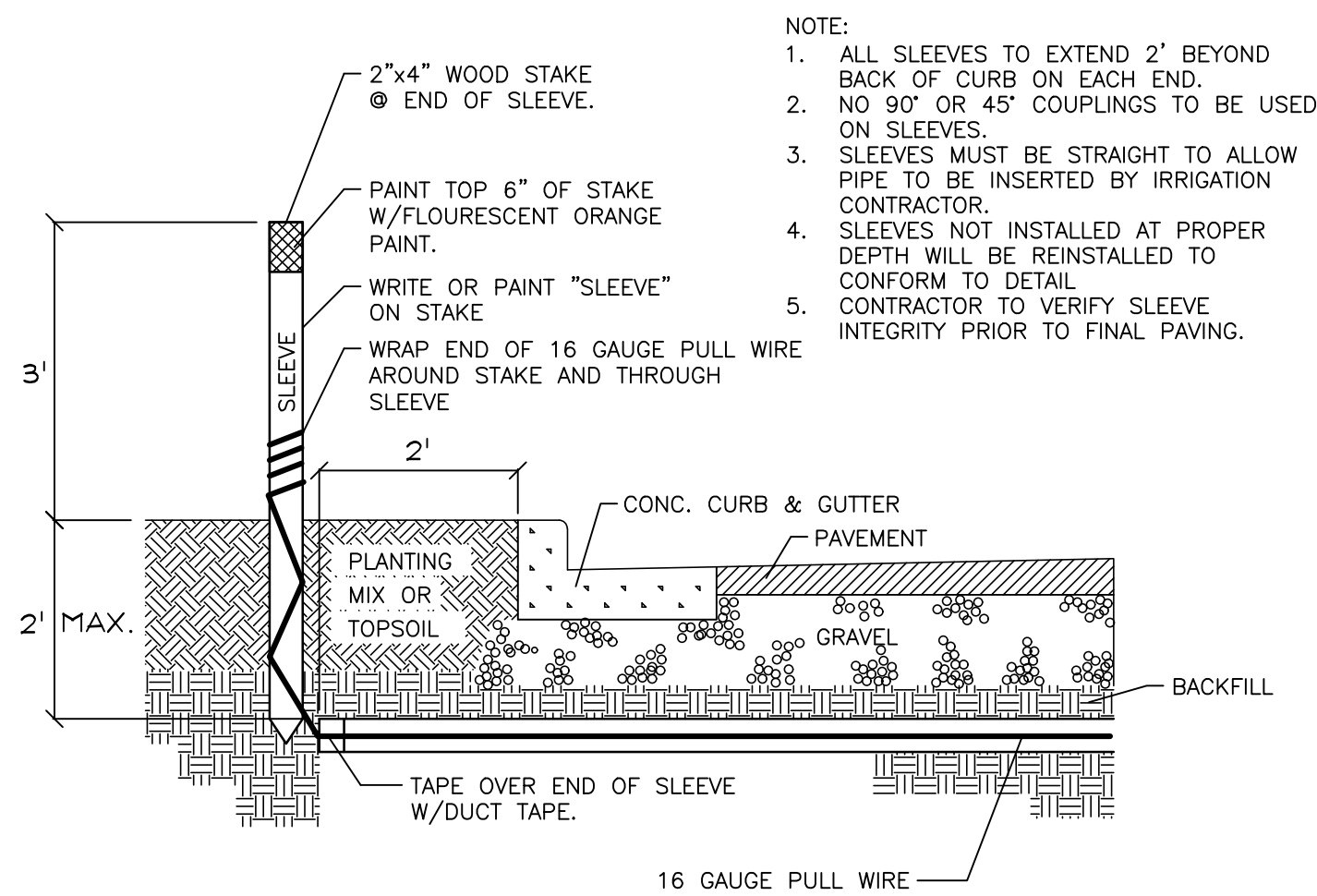
7 POP-UP SPRAY FLEX ASSEMBLY
3" = 1'-0"
32 8403.13-02



8 WALL MOUNT CONTROLLER
1" = 1'-0"
328409.13-02



9 RAIN SENSOR



10 IRRIGATION SLEEVING
NTS

Kimley»Horn

© 2025 KIMLEY-HORN AND ASSOCIATES, INC.
8201 PETERS ROAD, SUITE 2200, PLANTATION, FL 33324
PHONE: 954-535-5100 FAX: 954-739-2247
WWW.KIMLEY-HORN.COM REGISTRY No. 35106

KHA PROJECT 044203010	LICENSED PROFESSIONAL
DATE FEB 2025	THOMAS C. HARGETT, PLA
SCALE AS SHOWN	FL LICENSE NUMBER LA #6667512
DESIGNED BY TVC	DATE: 02/12/2025
DRAWN BY TVC	
CHECKED BY GR	